

RZR Zipperless Upper Doors (KIT)

2005020001, (Replacement Skins 2005000001)

Congratulations on your purchase of the Zipperless Upper Doors for your Polaris RZR XP. Please take note of the information and instructions below to get the most out of your Tusk Product.



Vehicle Fitment

- Polaris RZR XP (2014-2020)

Hardware

- (1) RH Upper Filler
- (1) RH Lower Filler
- (1) LH Upper Filler
- (1) LH Lower Filler
- (1) RH Zipperless Door Skin
- (1) LH Zipperless Door Skin
- (12) M6 x 16mm Button Head Bolt
- (12) M6 Nylon Locking Nuts
- (12) Loop Clamps
- (2) Disc Magnets
- (2) 3M VHB Tape Circles
- (4) 3" Foam tape strips
- (12) Philp head threaded snaps
- (12) 8-32 Hex Serrated Flange Nuts



(2) VHB Tape Circle



(12) M6 x 16mm
Button Head Bolts &
M6 Nyloc Nuts



(12) Threaded Snaps
& Hex Serrated Nuts



(12) Loop Clamps



(4) 3" Foam Tape



Door Skins
(LH&RH)



Upper and lower
Fillers (LH & RH)

Filler Install



1. We have found install of the Tusk Zipperless Upper Doors is easier done with other accessories off the machine. This includes roofs, rear windows, and front windows, and OEM Front filler. These accessories can be reinstalled once upper door install is complete.
2. Once your machine is prepped for install. Locate the (12) loop clamps, (12) M6x16mm button head bolts, and (12) M6 Nyloc nuts. Take (2) of the loop clamps and install a 3" strip on foam tape on the inside of the clamp. **This will make clamping force tighter so there will be less movement on the front fillers. (See image 1)*
3. The (2) loop clamps with the foam tape on the inside will be used for the LH and RH lower fillers. Located the LH lower fillers and place them on the A-Pillar of the roll cage using (2) M6 x 16mm bolts and (2) M6 nyloc nuts. (See Image 2 and Image 3) **Note the location of the notches on the top and bottom of filler.* Leave All hardware loose for now.
4. Locate the LH upper filler next. This will use (4) loop clamps and require (8) M6 x 16mm button heads bolts and M6 nyloc nuts. Tighten all the bolts and nuts that fasten the upper fill to prepare for install of door skin. (See Image 4)
5. Repeat steps 2-4 for the passenger side.

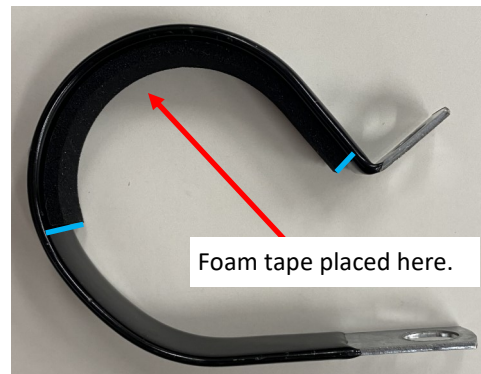


Image 1

Driver Side

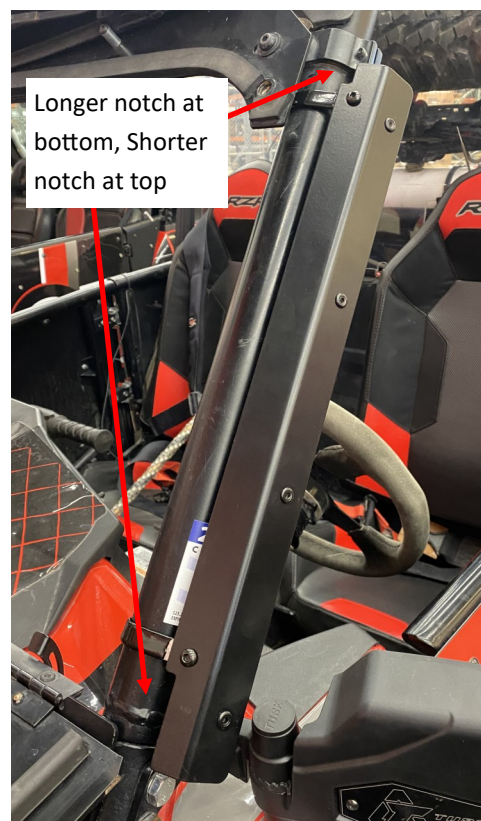


Image 2



Image 4



Image 3

Installing and adjusting for soft skins



6. With the upper fillers tightly installed, and the front filler loosely installed. It is time to install the door skins. Locate the LH side soft skin. Let the magnets attach on the top with the rest of the door left hanging. (See image 5)
7. Using the shorter straps along the back edge of the door, Secure them around the rear of the roll cage. (See image 6)
8. Now let the front magnets line up with the front filler. Adjust the filler accordingly. Tighten the front filler once you are happy with the fit. (See image 7)
9. Remove sticky backing off front edge of Velcro and apply to the inside of the front filler. (See Image 8)
10. Repeat steps 6-8 for the passenger side. **Note: Be sure you are satisfied with magnet alignment. This is critical for the next step.*



Image 5



Image 6



Image 7

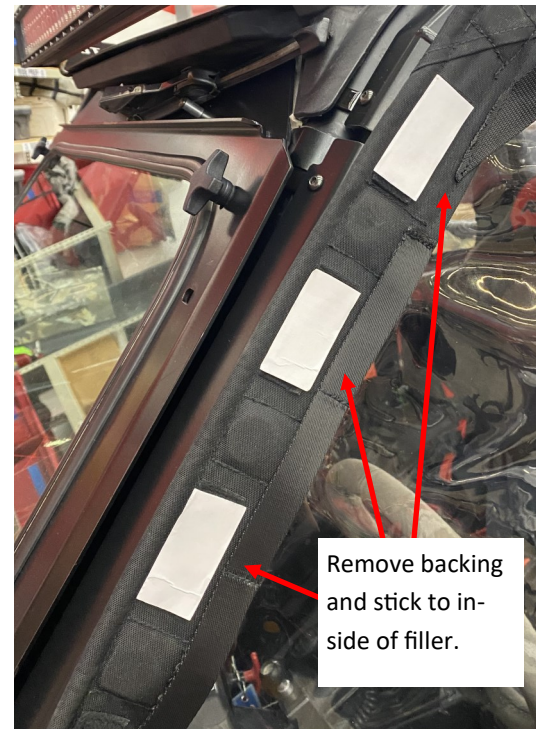


Image 8

Snap and final install



11. Locate and prepare to install the snaps to the lower door. The Tusk Zipperless Upper Door is designed to work with the OEM Half doors, and the Tusk Barricade Doors. These instructions will show them being installed on the Tusk Barricade Doors.
12. With the door skins attached to the rear of the roll cage, and the magnets all attached you are ready to install the snaps.
13. Let the fabric door rest on the bottom half door. At this time you will need to mark the spots to drill for the threaded snaps. We find using grease on the rim of the snap provides a good mark to locate where to drill.
14. With the snaps marked, Use a drill bit that is slightly oversized. Drill all the snap locations. Put the threaded stud through the door with the nut on the inside.
**Note: We have found it best to start in the middle and work outwards. (See Image 8-9)*
15. Once all snaps are installed, Located the 3M Round sticker and the disc magnet. Attach the magnet to the door skin in the lower front corner, and attach the 3M disc to the back side. (See Image 10)
16. Remove backing and attach the disc magnet to the body of the machine. Repeat steps 12-15 on passenger side.
17. Reinstall other accessories that may have been removed for install.



Image 9



Image 10



Image 11

18. Tusk Zipperless doors easily roll to the back of the machine when not in use. This is done by releasing all snaps, releasing all magnets, undoing the lowest Velcro strap, and rolling the soft skins towards the back of the machine. Use the two long Velcro straps to secure doors. (See image 12)

Congratulations on your purchase of the Tusk Zipperless Upper Doors! Visit www.rockymountainatvmc.com for a detailed video on instructions.



Image 12



Tusk Zipperless Upper Doors Notes/Comments

Thank you for the purchase of the Tusk Zipperless Upper Doors. Please take note of the caution label on the inside of the door. These door are not intended to be “Unrolled” or “In use position” on the machine if transporting on an open trailer. Please be sure they are in the rolled “Stowed” position.



Caution label on inside of door

We have also noticed that when storing doors for a period of time, it is best to have the Zipperless Upper Doors unrolled. Because of the nature of the clear poly vinyl it has memory of shape. If door is rolled tight for an extended period of time, It will take a time for door to return back to its original shape.



“Stowed” Position



“Unrolled” “In Use” Position